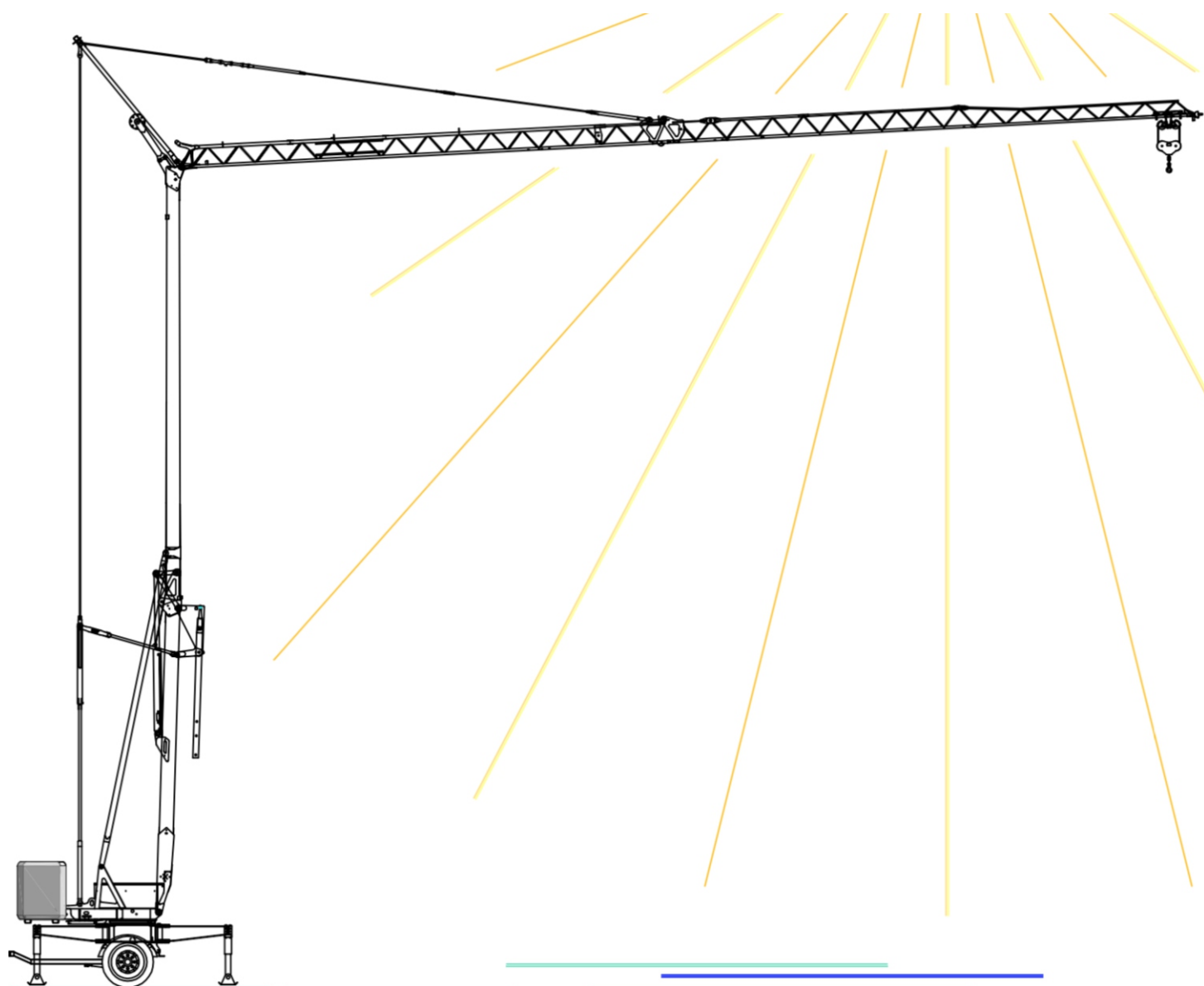


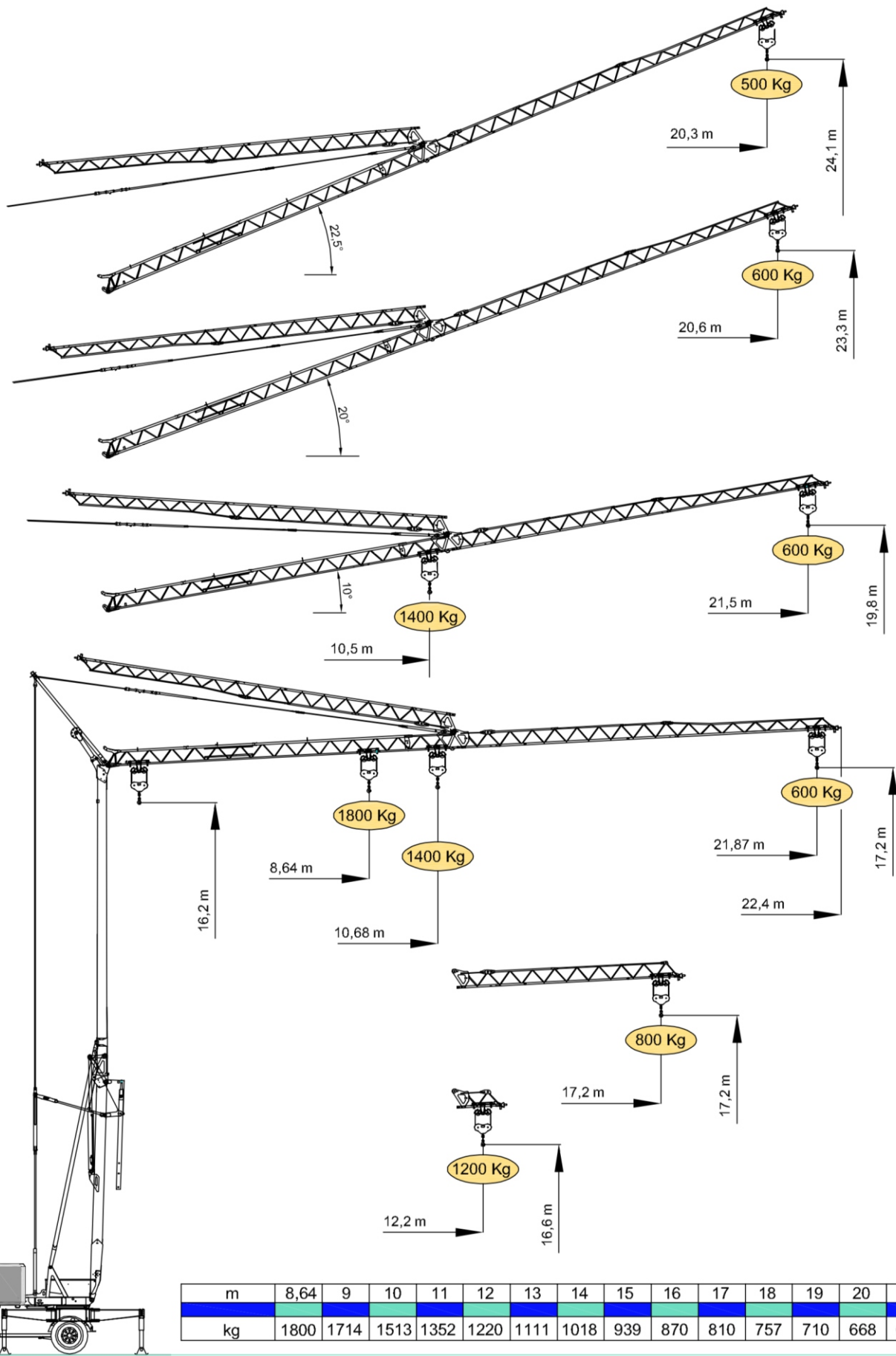
# VICARIO OMV 22AR




Oficjalny dystrybutor na Polskę



Zakłady Mechaniczne Vicario S.p.a.  
Specyfikacja może ulec zmianie bez wcześniejszego powiadomienia.



m	8,64	9	10	11	12	13	14	15	16	17	18	19	20	21	21,87
kg	1800	1714	1513	1352	1220	1111	1018	939	870	810	757	710	668	630	600

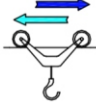



 Wyposażenie seryjne

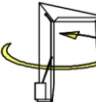



4 prędkości (biegi) podnoszenia sterowane płynnie falownikiem, 3 prędkości obrotu i wodzenia sterowane falownikiem, ocynkowana konstrukcja i naciągi, balast, unoszony wysięgnik, wózek z silnikiem i wyłącznikiem krańcowym umieszczonym u podstawy wieży, możliwość pracy ze skróconym wysięgnikiem, wbudowane sterowanie radiowe, przycisk awaryjny, osłona chroniąca łożysko oporowe i mechanizmy, przygotowanie do samobalastowania, skrzynka elektryczna ze stali nierdzewnej, dokumentacja zgodna z normami EWG

	 50 Hz V +10%-10%	m/l'	 6.7	 13.5	 23.5	 37
	 230 V	3 kW kg	1800 ↑ ↓	1350 ↑ 1800 ↓	700 ↑ ↓	500 ↑ 700 ↓
		4,5 kW kg	1800 ↑ ↓	1800 ↑ ↓	700 ↑ ↓	700 ↑ ↓
	 400 V	6 kVA kg	1800 ↑ ↓	1800 ↑ ↓	700 ↑ ↓	700 ↑ ↓
kW 5.5 Inverter						

 DOTAZIONE DI SERIE

Sollevamento "overdrive" a quattro velocità con inverter, rotazione e carrello a tre velocità con inverter, zincatura della struttura e dei tiranti, contrappeso, braccio impennabile, carrello rampante con motore e finecorsa alla base della torre, funzionamento con braccio ripiegato, comando a pulsantiera via cavo, carter di protezione per ralla e meccanismi, predisposizione per autozavorrimento e radiocomando, armadio elettrico in acciaio inox, documentazione a norme CEE.




	m/l'	 11.8	 18.9	 35.4 (↗26)
	kW	kW 1.85 Inverter		

	n/l'	 0.22	 0.56	 1.12
	kW	kW 1.2 Inverter		

	min	 5
	kW	1.5

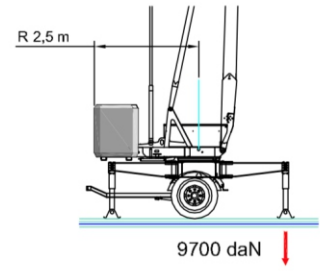
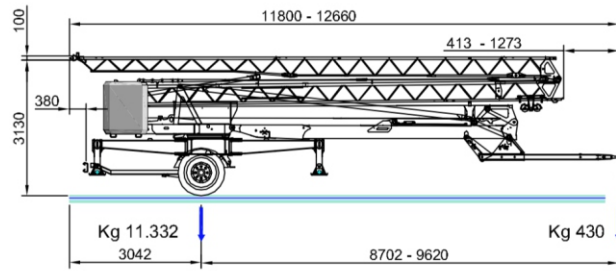
 STANDARD FEATURES

4-speed lifting, 3-speed rotation and trolley with inverter control, galvanised structure, counterweight, pull-up jib, translation trolley with motor and limit switch at base of gantry, operation with folden jib, cable-operated pushbutton remote control, guard for slewing ring and mechanisms, designed to allow installation of self-ballasting device and radio control, stainless steel electrical cabinet, documentation in accordance with EU standards.

	25 - 80 km/h		7012 kg		2 x 2375 kg
---	--------------	---	---------	---	-------------

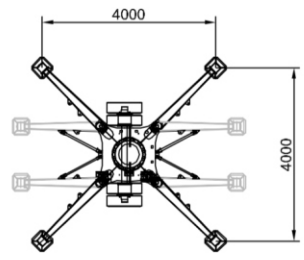
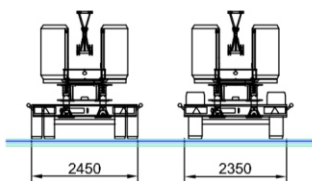
 EQUIPEMENT DE SERIE

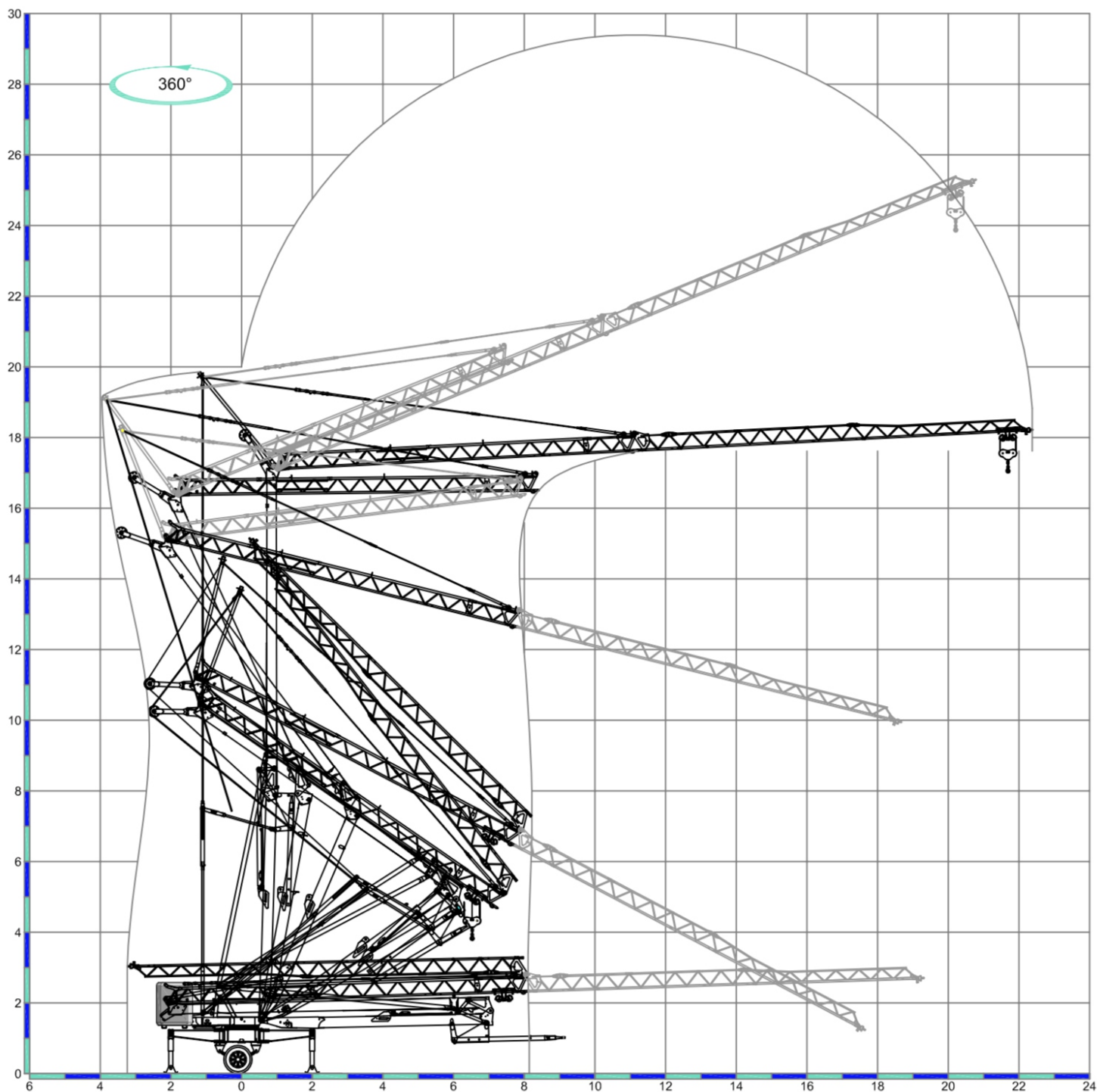
Levage à quatre vitesses, chariot et rotation à trois vitesses à contrôle électronique, galvanisation de la structure et des tirants, contre poids, flèche relevable, moteur de chariot et fin de course à la base de la tour, fonctionnement bras replié, commande par câble, carter de protection pour la couronne et les mécanismes, predisposition pour autolestage et commande radio, armoire électrique en acier inox, documentation conforme aux normes CEE.



 SERIENAUSSTATTUNG

Heben mit vier Geschwindigkeiten, Laufkatze und Rotation mit drei Geschwindigkeiten, Strukturverzinkung, Gegengewicht, hochklappbarer Arm, aufsteigender Wagen mit Motor und Anschlag an der Basis des Turms, Funktionieren mit eingeklapptem Arm, Steuerung mit Druckknopftaste via Kabel, Schutzvorrichtungen für Drehverbindungen und Mechanismen, Vorbereitung für Selbstballasteinname und Funksteuerung, elektrischer Schrank aus rostfreiem Stahl, Dokumentation gemäß EC Vorschriften.





**International Machinery Stock**

ul. Rogowska 9  
 54 -440 Wrocław  
 tel. +48 71 715 61 03  
 e-mail: [biuro@ims24.pl](mailto:biuro@ims24.pl)  
 www: [ims24.pl](http://ims24.pl)

Pieczałka:

